

## OUR PROPOSAL FOR A NEW, LOCAL HOME IN CASTRO VALLEY

Since our founding in 2000, we have delivered our unique immersive experiential programs to more than 76,000 children from schools throughout the Bay Area, and have even expanded our reach to over 24,000 adults in the workplace.

Our signature nature-based social emotional learning program has taken place at leased camps in the mountains of Napa and Santa Cruz. Now, we're seeking approval of a Conditional Use Permit (CUP) to establish a local Outdoor Recreation Facility that will keep this work accessible to Alameda County kids.

Mosaic  
Partner  
Schools

For a full list of partner schools, visit [mosaicproject.org/partner-schools](https://mosaicproject.org/partner-schools).

## A Trusted Local Partner to Alameda County Schools

Mosaic is looking to bring its impactful work to a convenient location for the community it serves, further deepening its decades-long relationships within the Alameda County education system.

- A local home in Castro Valley will ensure **greater accessibility** to our programs and the nature around us for schools with limited resources and transportation capacity.
- Our own site will enable schools to **participate year-round**, rather than being limited to a single season allowed on leased property.
- By being based in the heart of **Alameda County**, Mosaic can increase our presence within our nearby partner schools, expanding access and deepening learning for entire school communities.

“

The Mosaic Project is a gem of Alameda County which has been enriching our children's education for 25 years. With a permanent home in our own County, Mosaic can continue their important work for the next 25 years and beyond. They will make us proud as they serve as a model for programs nationwide!

Aisha Knowles, Alameda County  
Board of Education Member



## RECOMMENDED FOR APPROVAL BY COUNTY STAFF

Mosaic has worked closely with engineers, architects, environmental specialists, and County Planning staff for nearly a decade to create a beautiful and sustainable camp for our Outdoor Project.

A detailed Environmental Impact Report (EIR) found that our proposal would have no significant environmental impacts.

The entire project has been designed to meet or exceed all zoning and fire safety standards, ensuring responsible development of the site.

### 25 Years

of safe operations  
– not a single fire  
or wildlife-related  
incident

### 3 Miles

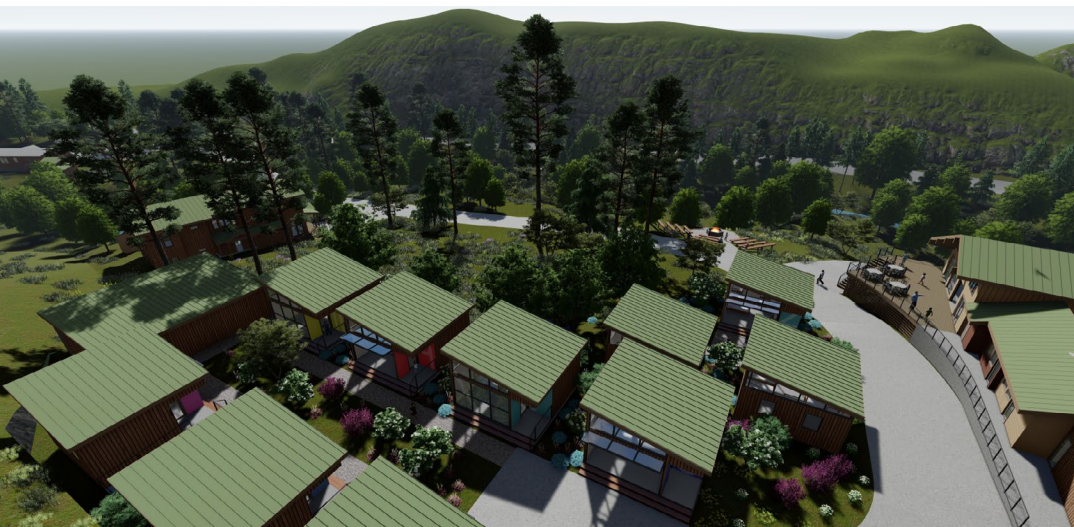
from the nearest fire  
station & evacuation  
center, ensuring rapid  
emergency response

### \$500K

invested in  
hydrogeological  
studies & sustainable  
infrastructure

## A Deep Commitment to Being Good Neighbors

We care about the same issues as our neighbors — safety, environmental stewardship, and responsible land use — and have taken every concern raised seriously. That's why we have designed a plan that is built to keep our children, staff, and community safe and healthy, and why County staff is recommending its approval.



## How We Got Here

Late 2016

Site identified as a potential location for Mosaic's new home

2017–2019

Technical studies, environmental review, and community outreach begin; property purchased

2020

CUP application submitted; partnership with Castro Valley Unified School District expands

2021–2023

Extensive revisions made in response to County recommendations and community feedback

2023–2025

Continued technical review; updated Environmental Impact Report circulated

Aug 2025

County staff's recommendation for approval of Mosaic's CUP presented to the CVMAC

Dec 2025

Recommendation presented to the WCBZA

2026 (if Needed)

Alameda County Board of Supervisors hearing

Learn More to Support Alameda County Schools, Kids, & Families.  
**MosaicProject.org/Building-Our-Future**

